



Kinetic Design Lab

ARCHITECTURE + INTERIORS + LANDSCAPES

Conex Evolution

New Directions in ISBU Container Buildings

❑ *1.6 Million (TEU) Twenty Foot Equivalent Units of (ISBU) Intermodal Steel Building Units enter the Port of Houston Every Year.*

❑ *ISBU's are suitable to fit the needs of the Building Industry, as they incorporate standard units of measure in 8'-0", 8'-6", 20', 40' and 53' dimensional sizes. These sizes are easily compatible with architectural and structural engineered systems and technologies such as; wood, steel and concrete building components.*

❑ *However, some challenges are presented when selecting ISBU containers to build with, including Environmental, HVAC, Electrical and Plumbing coordination.*



Uses & Functions

Residential



Commercial



Uses & Functions

Educational



Emergency & Disaster Relief



Materials & Methods

Erection

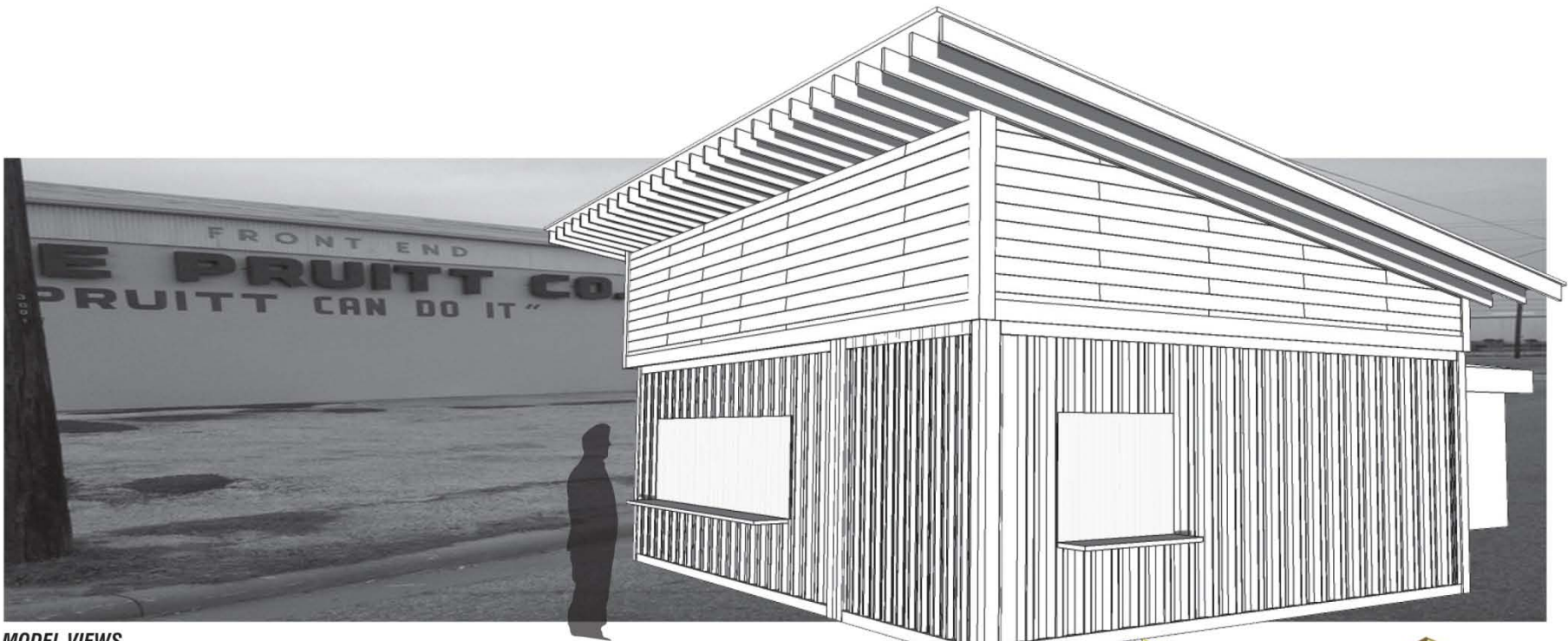


Stacking



Moon Tower Inn

A Case Study in ISBU Container Buildings



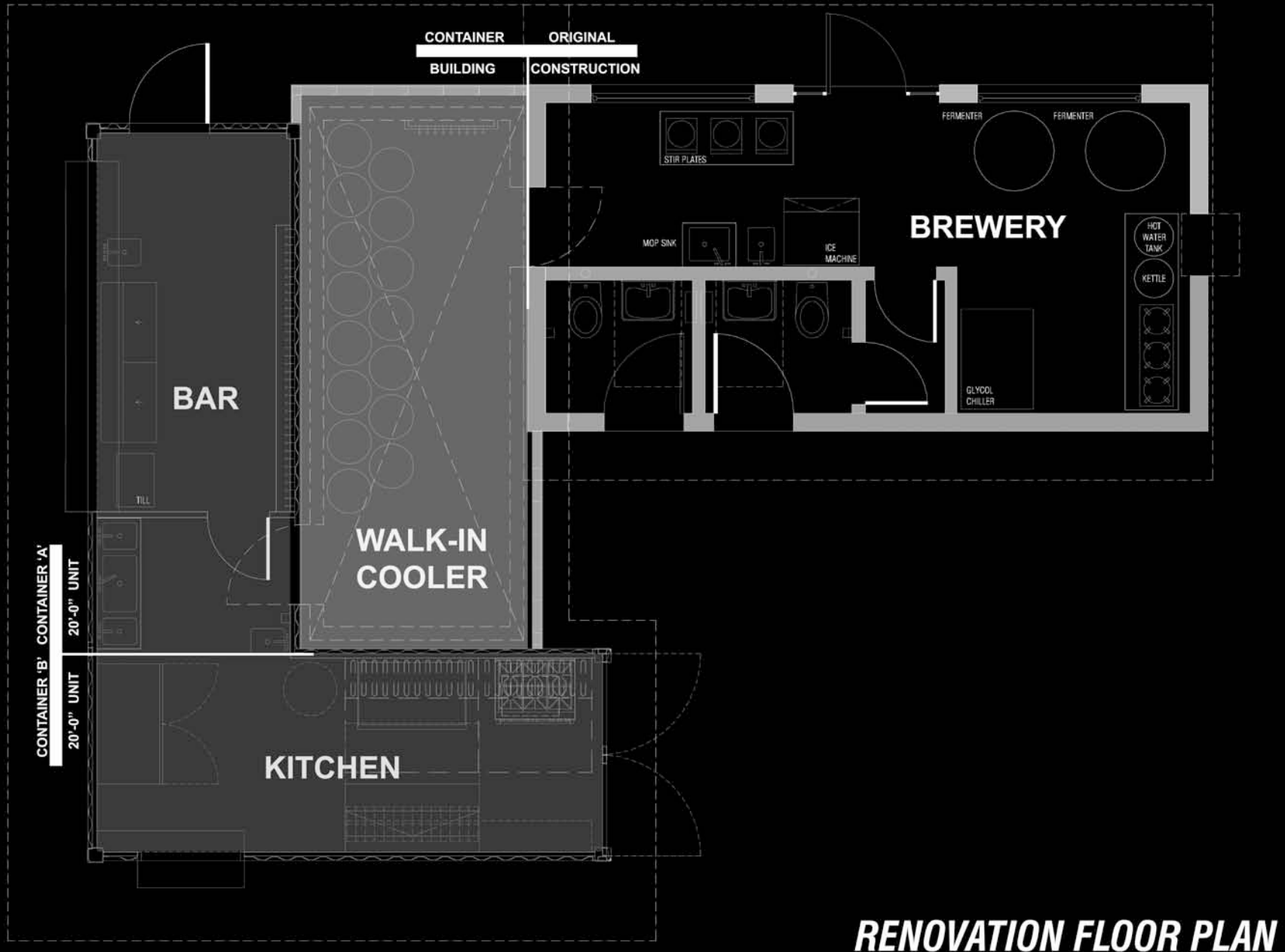
MODEL VIEWS





ORIGINAL BUILDING

CANAL STREET



RENOVATION FLOOR PLAN

Construction













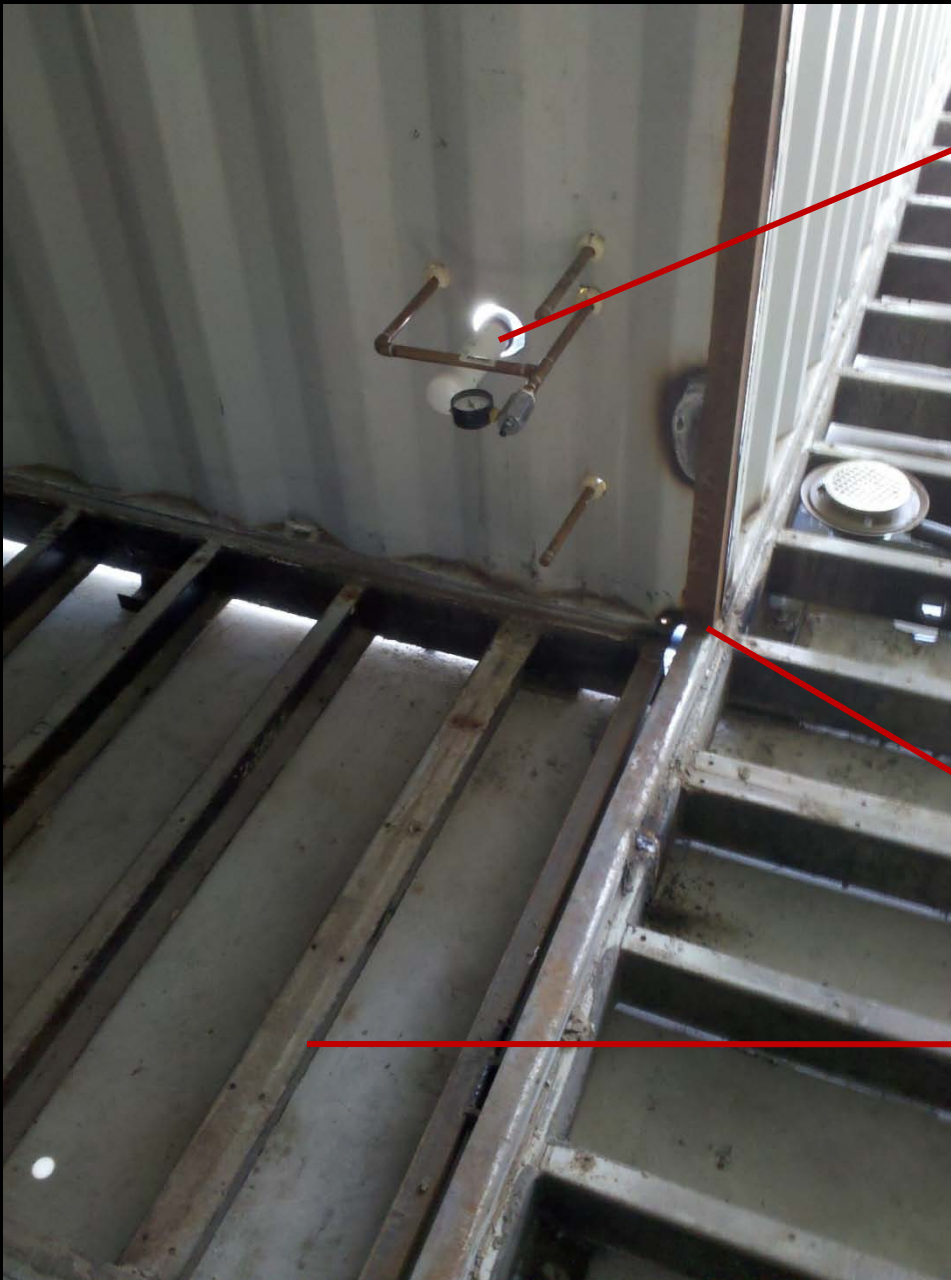




CONVENTIONAL CONCRETE SLAB FOR CONTAINERS AND COOLER







**WATER LINES AND DRAIN
PENETRATIONS FOR HAND
SINKS, TYPICAL**

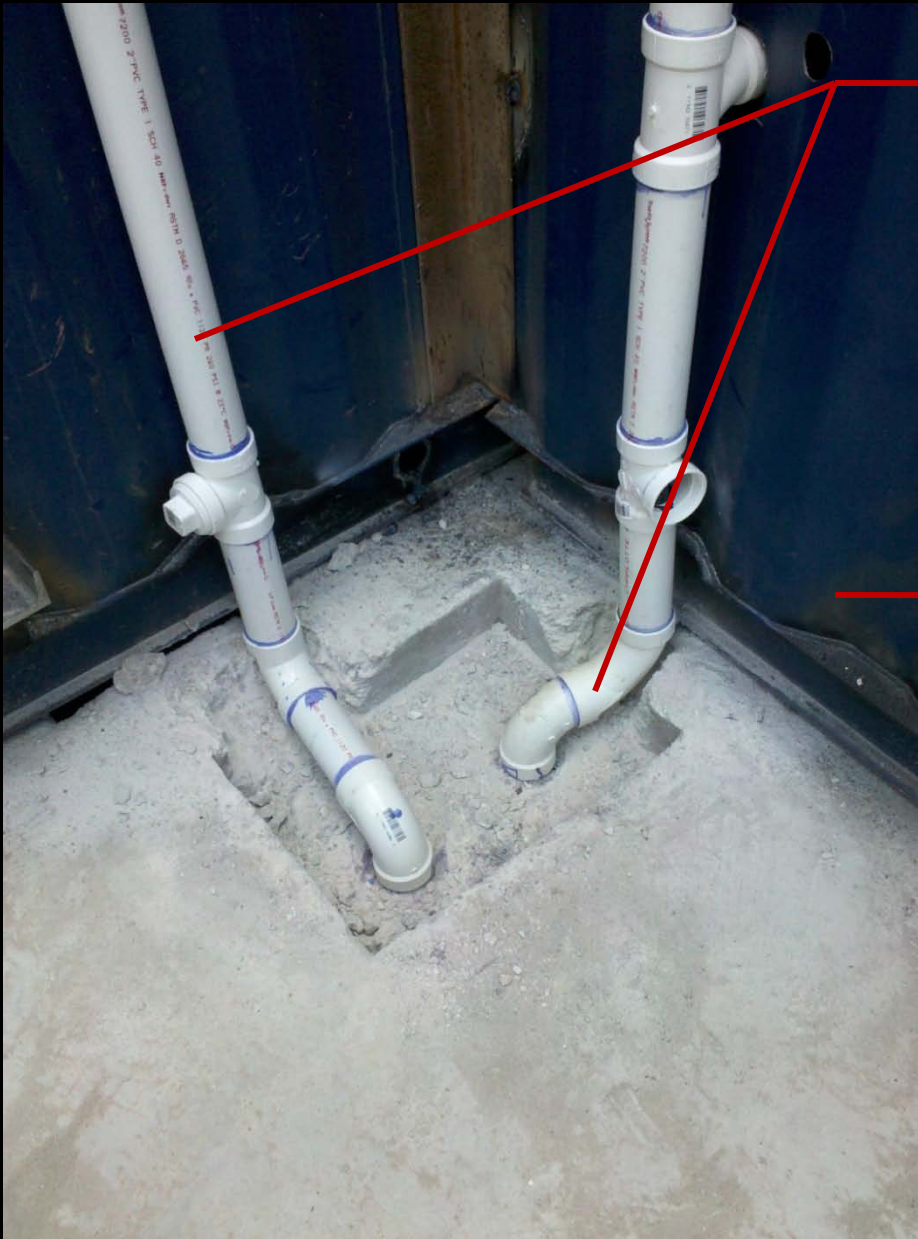
**90 deg. ANGLE CONNECTION
AT CORNER DETAIL**

**METAL CHANNEL STUDS AT
FLOOR, TO BE FOAM
INSULATED AND COVERED
WITH 1 1/4" WOOD DECKING**



***R-PANEL AT INTERIOR WALL OF
CONTAINER STRUCTURE***

***PERMETER STEEL CHANNEL,
BOLTED TO SLAB TO MEET WIND
LOADING REQUIRMENTS***



***WATER DRAIN LINES TO SANITARY
SEWER THROUGH CONCRETE SLAB,
TYPICAL***

***R-PANEL WALL AT EXTERIOR OF
CONTAINER STRUCTURE***



***TRADITIONAL COLD FORMED
METAL FRAMING AT OPENINGS,
TYPICAL***

***TRADITIONAL BREAKER
PANEL BOX FOR ELECTRICAL***

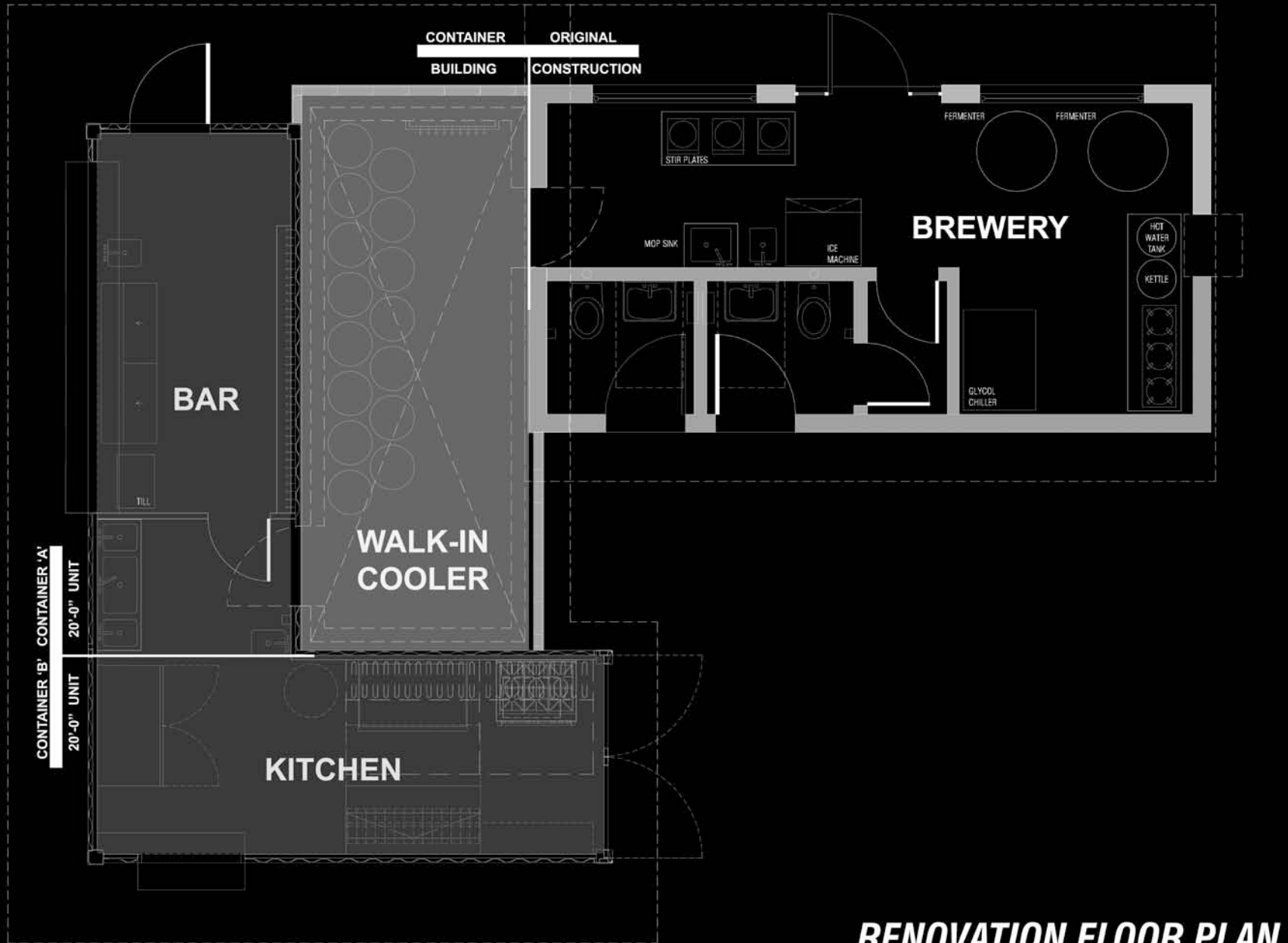


***CONTAINER STRUCTURE FOR
BAR AREA***

EXISTING BUILDING (BREWERY)

***VOID FOR PRE-MANUFACTURED
PANELIZED COOLER SYSTEM***

CANAL STREET



RENOVATION FLOOR PLAN



**INTERIOR CEILING OF CONTAINER
STRUCTURE (KITCHEN AREA)**

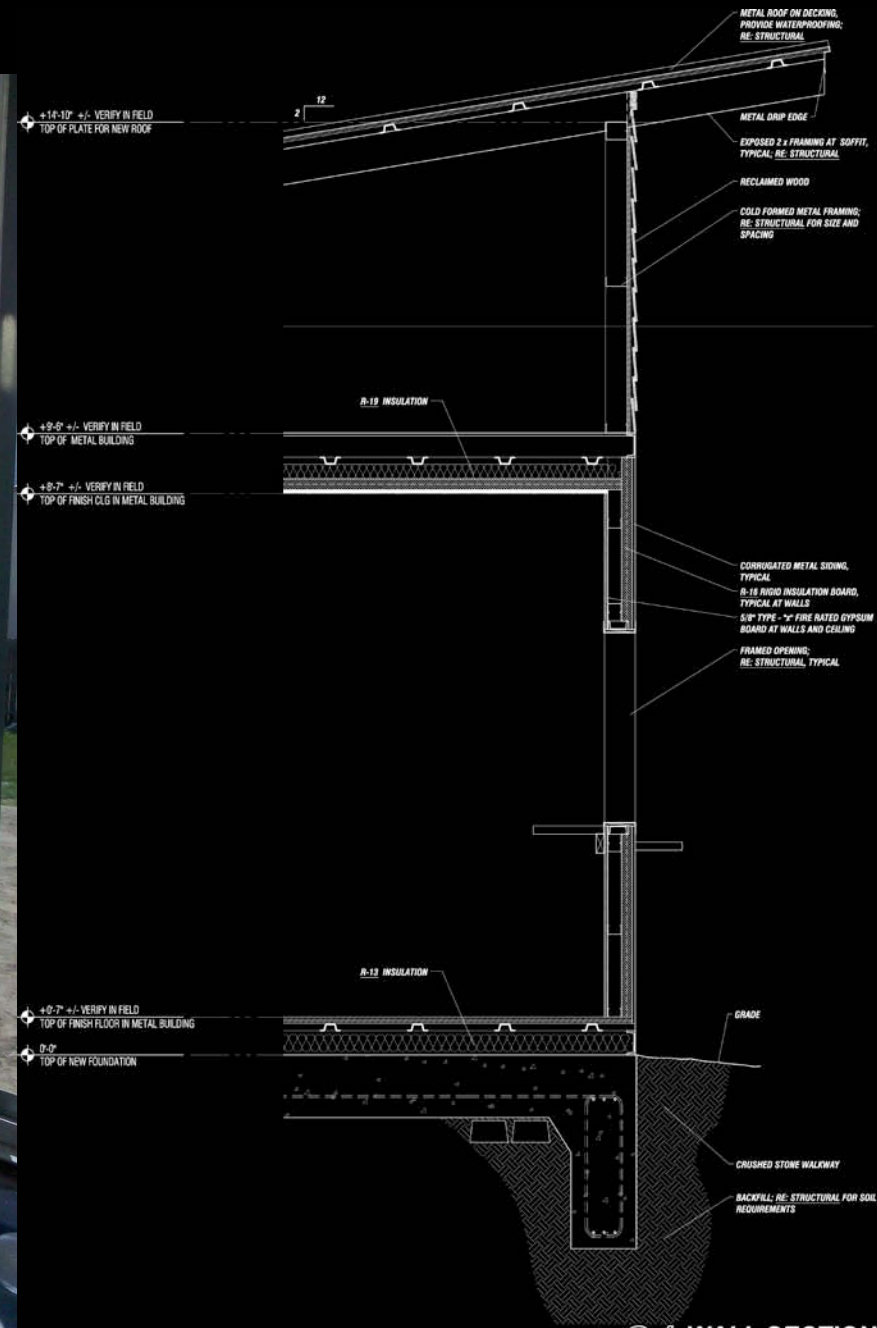
**TRADITIONAL COLD FORMED
METAL STUDS TO FURR OUT
WALL FOR; MECH., ELEC. and
PLUMBING REQUIRMENTS**

**1 1/4" TOUNGE & GROVE WOOD
FLOORING TO BE COVERED
WITH COLORED EPOXY FINISH**











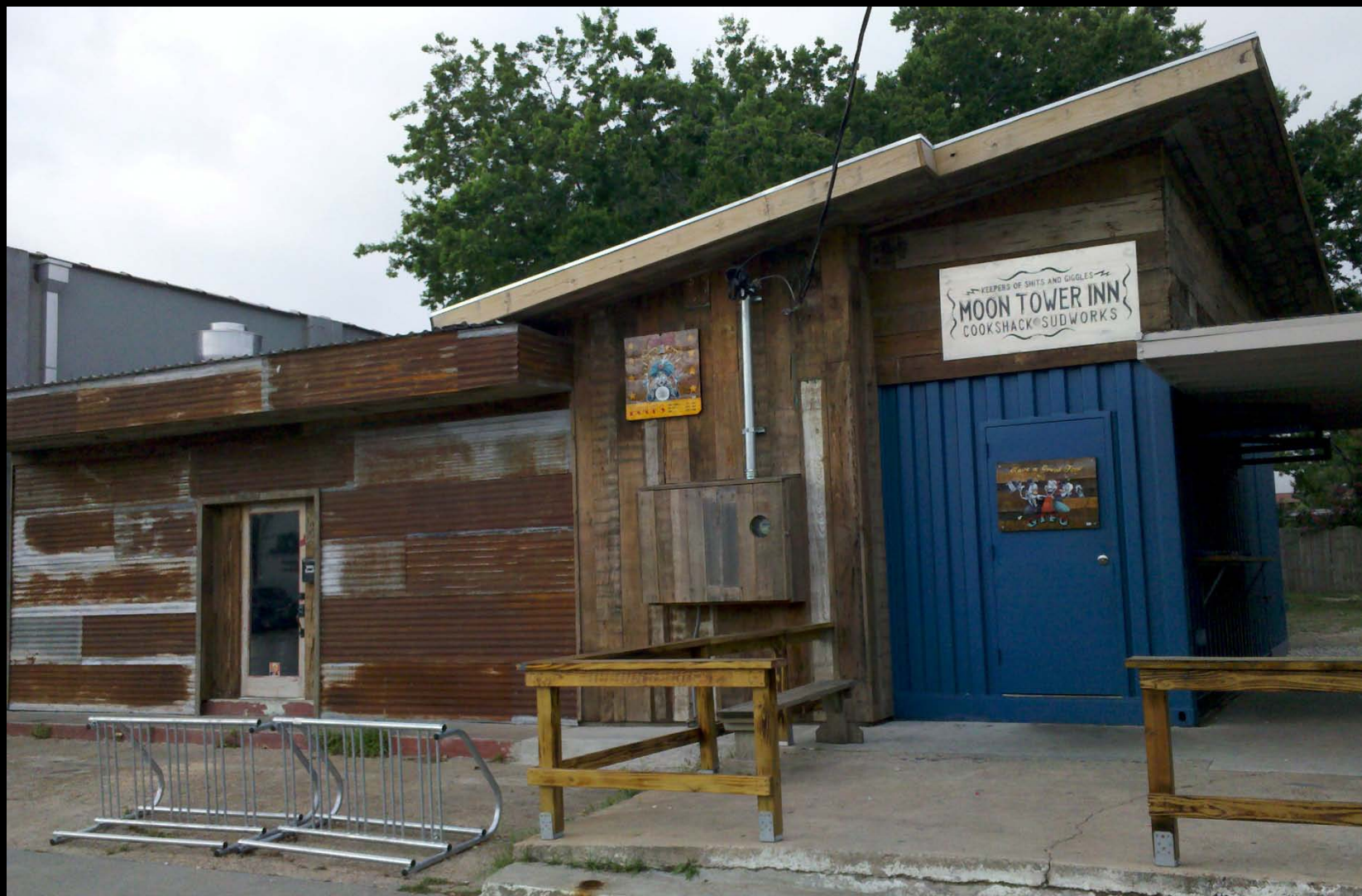


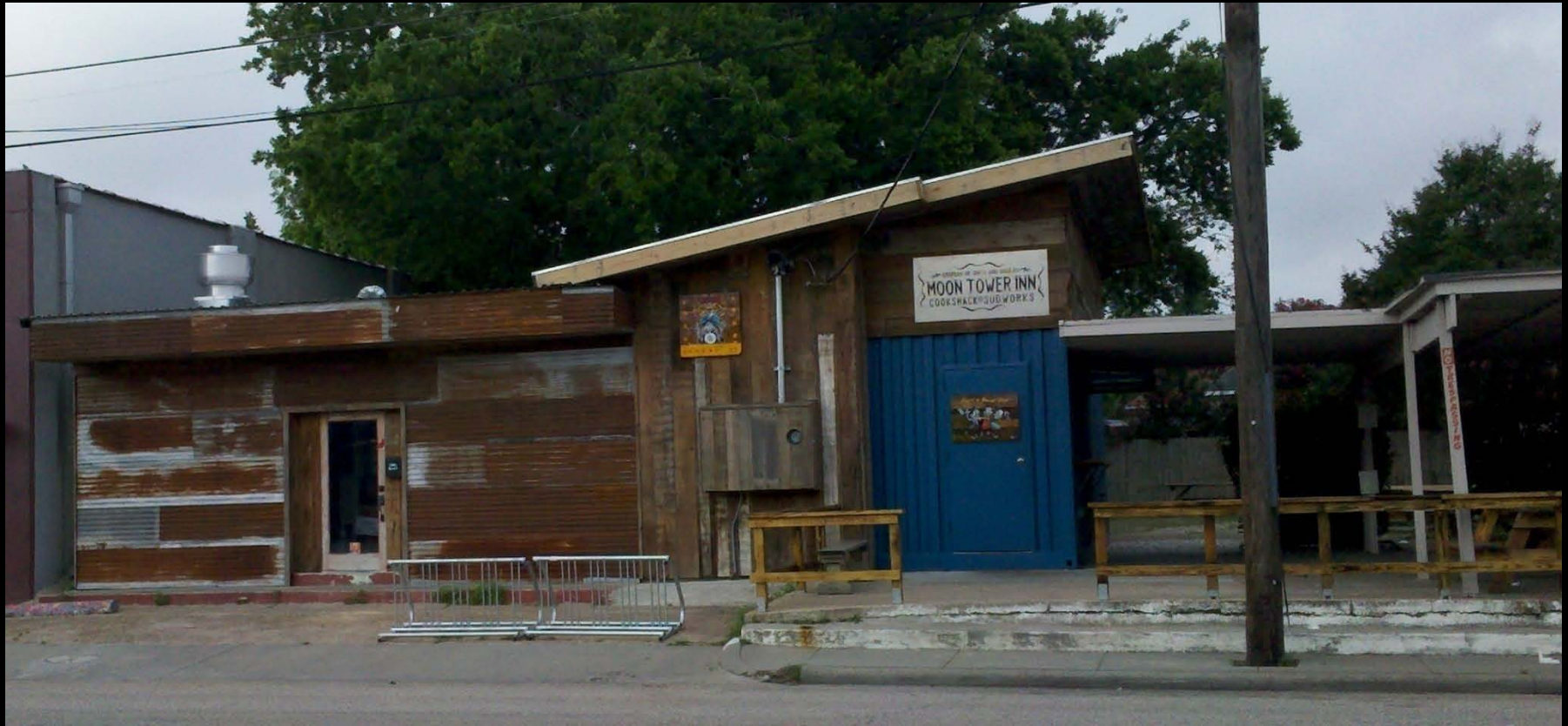












Kinetic Design Lab

ARCHITECTURE + INTERIORS + LANDSCAPES

t: 713.898.2042

e: kineticdev@msn.com

www.kineticdesignlab.com