

A photograph of a large, bright indoor atrium. The space is filled with lush greenery, including various tropical plants and a large, multi-tiered waterfall cascading over dark rocks. The architecture features high ceilings with recessed lighting and large, arched windows that allow natural light to flood the space. The overall atmosphere is clean, modern, and nature-inspired.

Multifamily Green

Design and Implementation

Jair Vasquez, P.E.

Current Green Building Practices for Multifamily

- LEED for Homes or New Construction
- NAHB – National Green Building Program ICC-700
- Energy Star – Builders Option. (BOP)



Multifamily Green Problems

- Apartments are not single family
- Apartments are classified commercial above 3 stories for energy code
- Apartments in our climate zone not conducive to Heat pumps (BOP)
- No credit for lower levels
- Space limitations
 - Gas/electric
 - Location of equipment
- No Verification

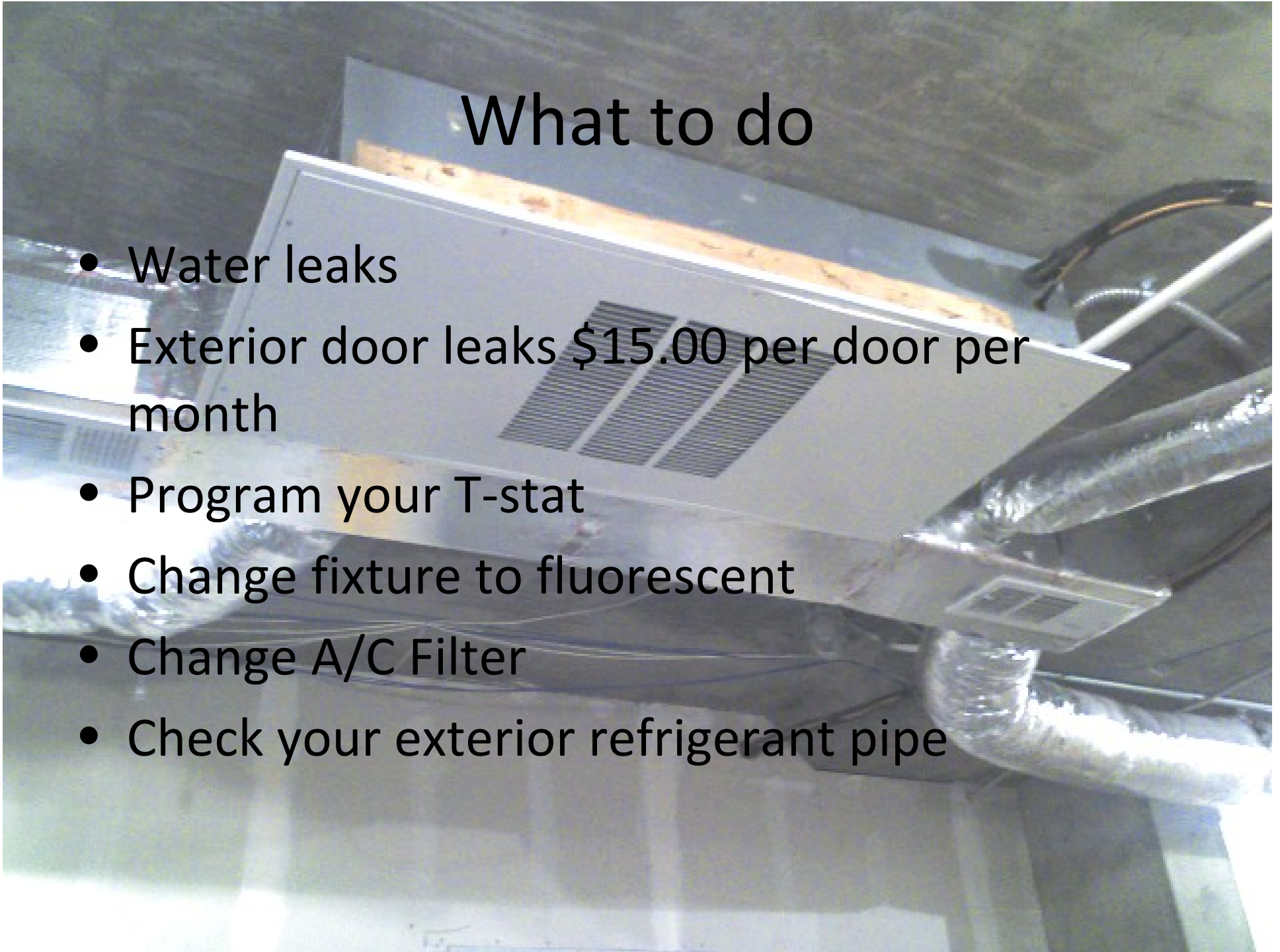


Current Green Building Practices for Multifamily

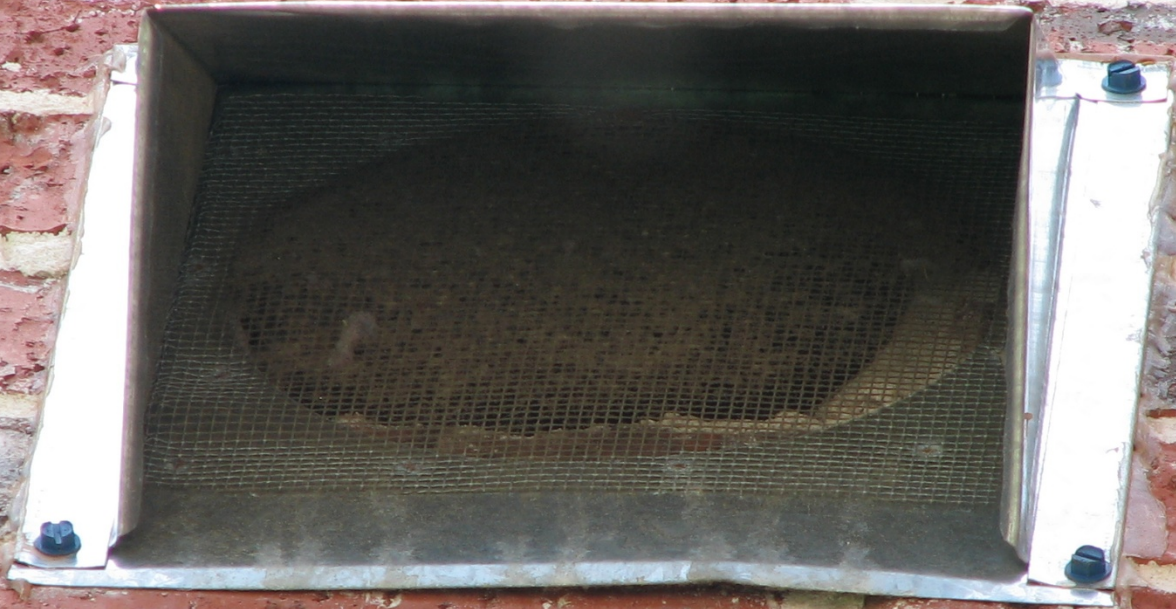
- Fluorescent lighting
- Low flow fixtures
- High efficiency air conditioning units
- Wall and ceiling insulation R-30, R13.
- Low E glass and glass doors.
- Programmable T-stats
- Duct location and insulation.

What to do

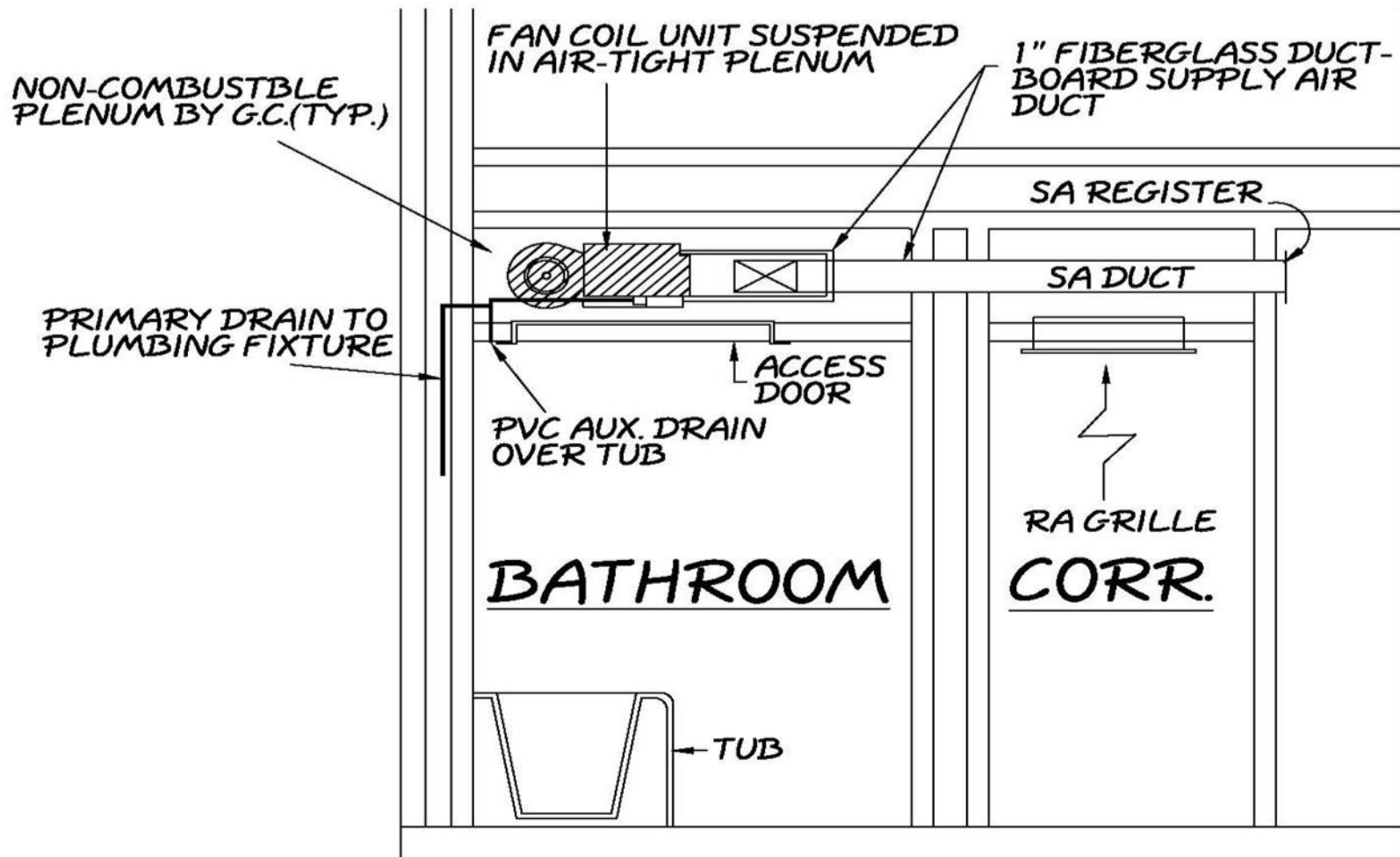
- Water leaks
- Exterior door leaks \$15.00 per door per month
- Program your T-stat
- Change fixture to fluorescent
- Change A/C Filter
- Check your exterior refrigerant pipe

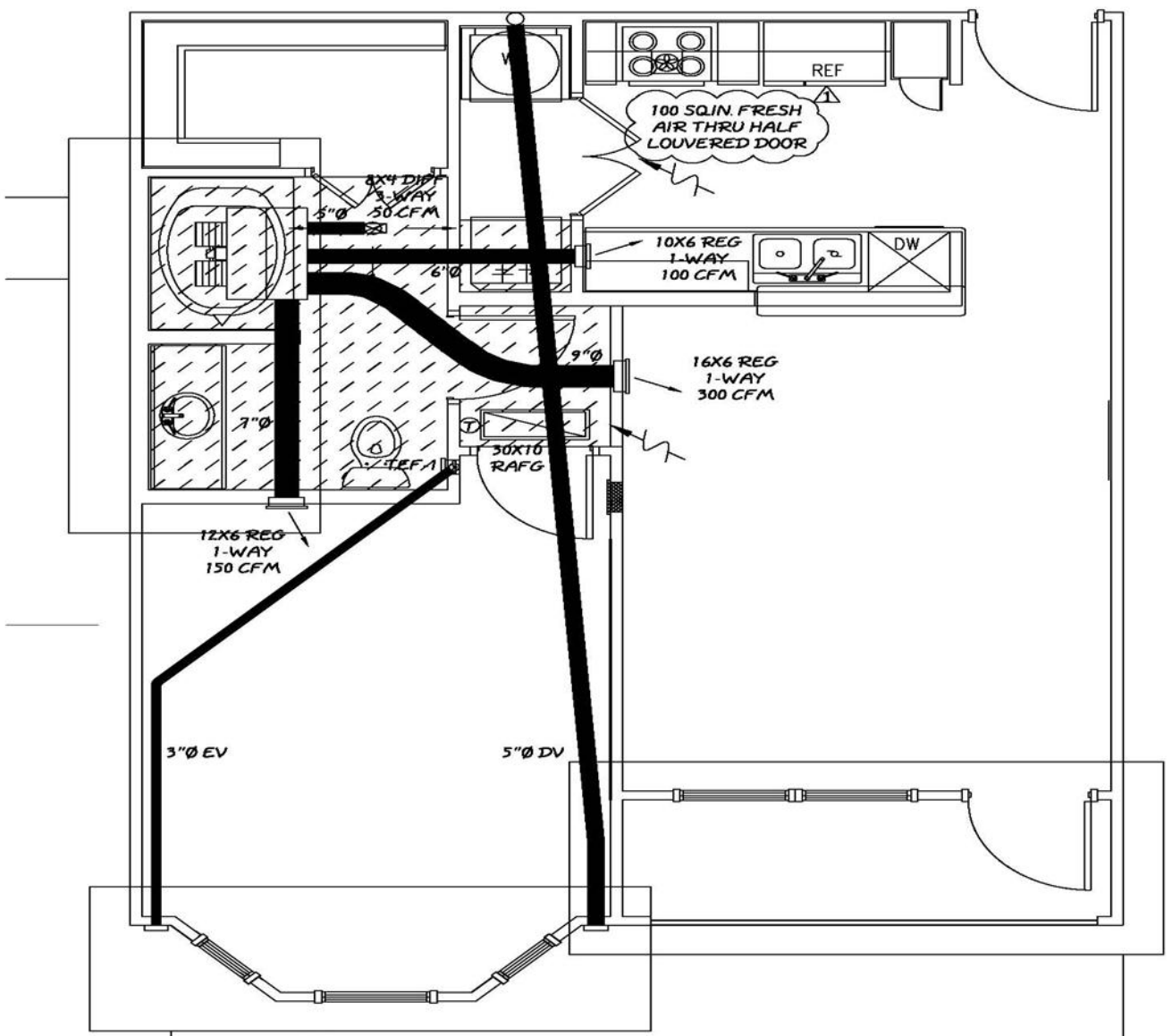


OUTDOOR AIR CLEANER THAN INSIDE
AIR?



TYPICAL APARTMENT AIR HANDLER





1 UNIT A
 SCALE: 1/4" = 1'-0"



jv@hgeconsulting.com