

GBRC Webinar

Electronics Recycling Industry Seminar

04.22.2020



Responsible E-cycling Solutions.

Clive Hess | Executive Vice President | (713) 866-8021 | chess@compucycle.com

What is Electronics Waste



Definition of Electronics Waste

E-Waste or electronics waste is created when an electronic product is discarded after the end of its useful life.”



Creates Hazardous Waste

Typical By-products of E-waste:

- **Heavy metals** - Lead, mercury and cadmium
- **Chemicals** - CFC's and flame retardants found in plastics

If landfilled, these can potentially leach into the soil, pollute water and enter the food chain.

For more information, visit: https://en.wikipedia.org/wiki/Electronic_waste
and <https://www.ban.org/news/2018/11/5/e-waste-chokes-southeast-asia>

History of Electronics Waste



Where has it been going?

United States generates **over 40 million metric tons** per year of electronic waste.

Since the 1970's, China was considered the primary dumping ground for e-waste in the world, followed by India and Southeast Asia.

Worldwide, **only 20% is collected and recycled.**

The remainder winds up in landfills, traded illegally, or processed in a substandard way.

China bans the Import of E-Waste in 2018

Up until just recently, 70% of the world's electronic waste was exported to China. e-Waste generated in the USA is now being processed domestically and/or landfilled.

For more information, visit Financial Times at <https://www.ft.com/content/26e1aa74-2261-11ea-92da-f0c92e957a96>

Certifications



Legislation

- 2003 –California was the 1st state to put an Electronic Waste Recycling statute in place.
- Currently - 28 states have implemented **Electronics Waste Recycling Programs**.
- Texas has a TV recycling program and computer recycling program.

Reputable electronics recycling companies go through annual auditing to get certifications that show that they are processing electronics waste properly.

These certifications include:



For more information, visit <https://www.ncsl.org/research/environment-and-natural-resources/e-waste-recycling-legislation.aspx>

Recycling Programs



Responsible E-cycling Solutions.

Certifications



Texas Commission on Environmental Quality

To find where and what types of TV's and Computers you can recycle, visit:



Texas Recycles Computers Program

www.texasrecyclescomputers.org

Texas Recycles TVs Program

www.texasrecyclestvs.org

City of Houston Solid Waste Management Department Electronics Donation and Recycling

www.houstontx.gov/solidwaste/electronics_recycling

Visit the Website to find:

- Westpark Consumer Recycling Center
- Environmental Service Centers
- Once a Month Drop-Off Sites

Most of these Recycling Programs have a limit on the number of items you can bring in at a time, typically 3 to 5

Certifications



Environmental Protection Agency (EPA)

Electronics Donation and Recycling

<https://www.epa.gov/recycle/electronics-donation-and-recycling>

- Why Donate or Recycle your electronics
- Where to donate or recycle your electronics
- Certified Electronics Recyclers

<https://www.epa.gov/smm-electronics/certified-electronics-recyclers>

- What are certified electronics recyclers
- How to find a certified electronics recycler
- Fact Sheet of the Electronics Recycling Standards: R2 and e-Stewards

[https://www.epa.gov/sites/production/files/2016-02/documents/u s epa fact sheet implementation study 1.pdf](https://www.epa.gov/sites/production/files/2016-02/documents/u_s_epa_fact_sheet_implementation_study_1.pdf)

Certifications



Take Back Programs

Dell Reconnect Program – Dell has a partnership with Goodwill that provides free and responsible computer recycling – of any brand and in any condition – at over 2,000 Goodwill locations throughout the United States.

<https://www.dell.com/learn/us/en/id/videos~en/documents~reconnect-motion-graphic.aspx>

Best Buy Electronics Recycling – accept certain types of equipment, and sometimes there is a charge

<https://www.bestbuy.com/site/services/recycling/pcmcat149900050025.c?id=pcmcat149900050025>

Staples Electronics Recycling Program - website shows a list of accepted and non-accepted items

<https://www.staples.com/sbd/cre/marketing/sustainability-center/recycling-services/electronics/>

Can I Recycle This?



CompuCycle's Acceptable Materials

We accept nearly all electronics of any age, working or non-working.

Computer Displays (LCD, LED, Plasma)

Laptops and Desktop Computers

CRT Monitors

Servers

Hubs, Routers, Modems & Switches

Hard Drives

Memory Chips / RAM

Processor Chips

Keyboards & Mice

Cables & Cords

Printers

Circuit Boards/ Electronic Components

Fax Machines

Cell Phones

UPS/ Battery Backup

Power Supplies

PDA's

Telephones

Toner Cartridges (new and used)

Televisions (CRT, LCD, Plasma & LED)

Cable TV Boxes

DVD/CD/VCR Players

Game devices (Xbox, Play Station,
Nintendo, etc.)

Can I Recycle This?



CompuCycle's Not Accepted Items

Household Appliances:

Refrigerators

Stoves

Freezers

Air Conditioners

Irons

Rice Cookers

Space Heaters

Floor Lamps

Fans

Rice Cookers

Washer/Dryer

Other:

Vacuum Cleaners

Dehumidifiers

Light Bulbs

Oil Waste

Hazardous Materials

Speakers

Media DLT Tapes

Cassette Tapes

VHS

Tapes

Thermostats,

Smoke Alarms

Paint

Medical/ Biohazard Waste

Solar Panels

Batteries: Alkaline AA, AAA, C, D, 9V, Hearing Aids, Watches

Recycling or IT Asset Disposition (ITAD)



Responsible E-cycling Solutions.

Business Recycling



Responsible E-cycling Solutions.

What is Different about Recycling for Businesses?

Ultimately, businesses need to work with a Reputable Recycling company that will protect their brand, and their data

Scale: Larger number of Assets

Condition: Reusable Equipment

Value: Want to get Value back for Assets that can be Sold

Data Protection: Concerned about Security of their Data

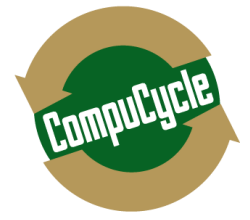
Environmental Compliance: They can get in trouble if their Assets end up in a Landfill

Reporting: Need Proof of where their Assets Went, and what happened to them

Certificates of Data Destruction and Recycling

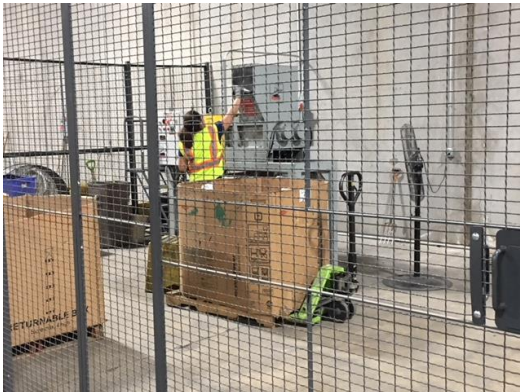


IT Asset Disposition (ITAD)



Responsible E-cycling Solutions.

What is Different about Recycling for Businesses?



Secure Facility



Onsite Services



Data Sanitization

These additional services are the difference between a Recycling company and an IT Asset Disposition Service Provider (**ITAD**)

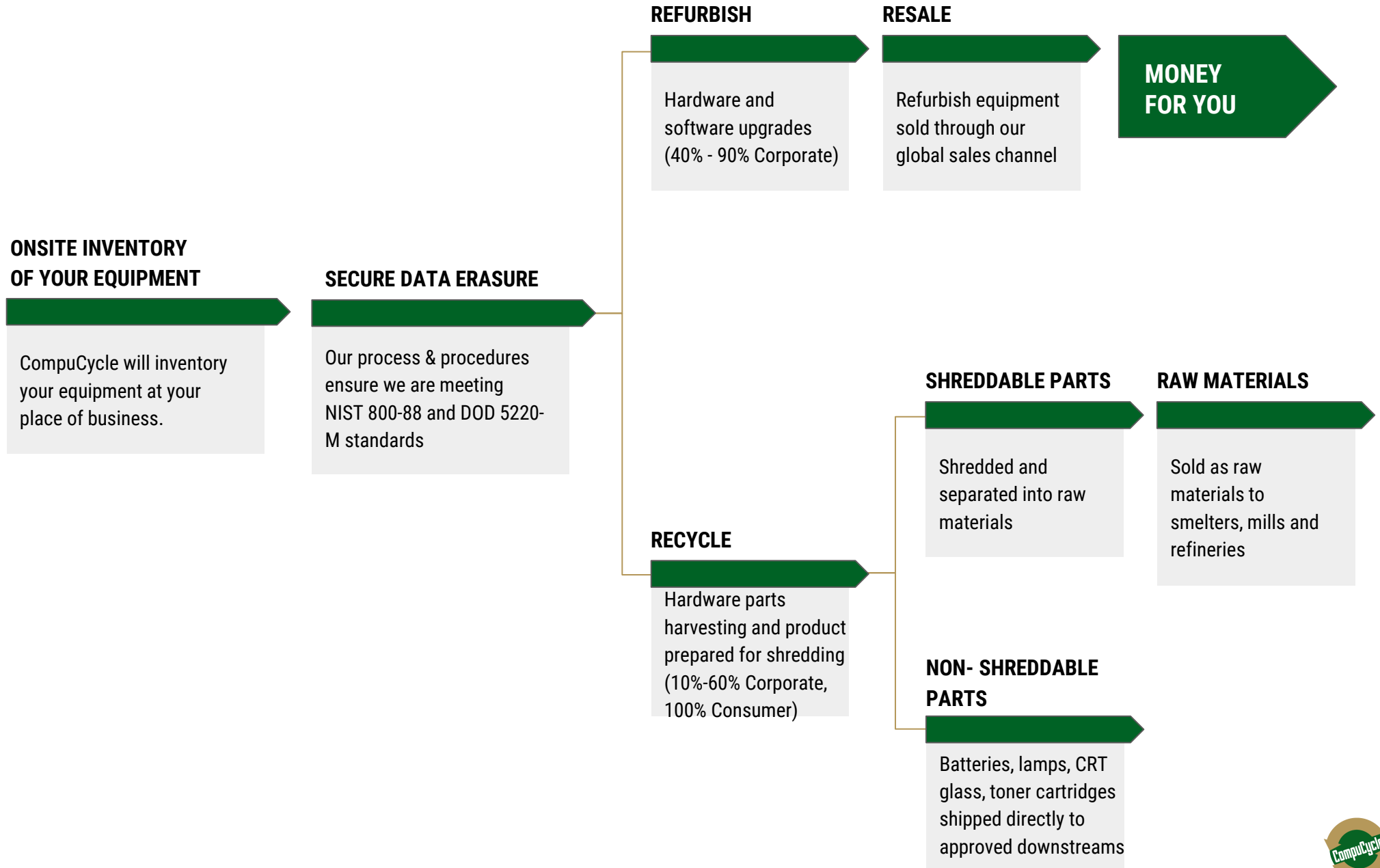
Additional Services include:

Onsite Shredding
Remarketing of Assets
Serialized Audit Reporting

Secure Transportation
Data Center Decommissioning
Certificates of Data Destruction

Parts Harvesting
Online Portal

How Shredding Fits into CompuCycle's ITAD Process



Our Shredder



CompuCycle's state-of-the-art shredder line provides total end-of-life asset destruction in one place, ensuring your sensitive materials are completely, safely and securely destroyed.



SAMPLE: Basic Audit Report

BASIC AUDIT REPORT

Lot# 19000



Received: March 1st, 2017

SHIPPED FROM	SHIPPED TO	BILLED TO
	CompuCycle, Inc. 8019 Kempwood Dr Houston, TX 77055 Acct Mngr: Clive Hess	

NO.	ASSET #	CUST ASSET #	CLASS	MFG	MODEL	MODEL #	SERIAL #
1	913160	NONE	(Upstream) TVs	Cisco	TELEPRESENC E HIGH DEFINITION 1080	CTS-500- DISP37-INT	FTX1447600T
2	913161	NONE	(Upstream) TVs	Cisco	TELEPRESENC E HIGH DEFINITION 1080	CTS-500- DISP37-INT	FTX1447600S
3	913162	NONE	(Upstream) Monitor - LCD	Dell	1708FPf	N/A	CN0C552H72872 87L37LSA00
4	913163	NONE	(Upstream) Monitor - LCD	MITSUBISHI	m55lcd-bk	N/A	212015784
5	913164	NONE	(Upstream) Network Equipment (Cisco)	Cisco	CTS-500 Telepresense Module	CTS-CODEC- PRI-G2 V04	FOC144480N3
6	913167	NONE	(Upstream) Network Equipment (Cisco)	Cisco	CTS-500 Telepresense Module	CTS-CODEC- PRI-G2 V04	FOC144480JR
7	913168	NONE	(Upstream) Monitor - LCD	Dell	2000 FP	N/A	TW09E24946635 26T10QQ
8	913177	NONE	(Upstream) Server	Dell	POWEREDGE 2950	2950 II	FQ87KF1
9	913911	NONE	Hard Drives	Seagate	ST9160411AS G	N/A	5TG0KAZ6



SAMPLE: Hard Drive Report

HARD DRIVE AUDIT REPORT

Lot #: 19000



Received: March 1st, 2017

SHIPPED FROM	SHIPPED TO	BILLED TO
	CompuCycle, Inc. 8019 Kempwood Dr Houston, TX 77055 Acct Mngr: Clive Hess Phone: 713-866-8021	

Total Units Destroyed: 8

Total Units Wiped: 12

NO.	SERIAL #	CUSTOMER		MANUFACTURER	MODEL	INTERFACE	SIZE	CAPACITY	PARENT CLASS	PARENT SERIAL #	ASSIGNED SECURITY	PERFORMED SECURITY	STATUS	TECH
		ASSET ID												
1	Y28D88JC	NONE		Maxtor	NA	SATA		80 GB	(Upstream) PC	MXL5280CQ2	HDD Destroy	In Unit: HDD Destroy	SUCCESS	jguzman
2	WCAV3C901221	None		Western Digital	NA	SATA		160 GB	(Upstream) PC	LKCYPAR	HDD Destroy	In Unit: HDD Destroy	SUCCESS	hnunez
3	3JA7DKA1			HP	BD03685A24				Hard Drives		HDD Destroy	Loose Unit: HDD Destroy	SUCCESS	rperry
4	090409FC1223NPG EEGRC	None		HITACHI	HITACHI HTS72321	SATA		160GB	(Upstream) Laptop	L3APD1F	HDD Wipe x 1	In Unit: HDD Wipe x 1	SUCCESS	fstanley
5	NP0JT582WWKD	None		FUJITSU	FUJITSU MHT2040AH	PATA (IDE)		40GB	(Upstream) Laptop	L3THEGP	HDD Destroy	In Unit: HDD Destroy	SUCCESS	fstanley
6	PF1H75E8S8HRZM	none		HITACHI	HDS728080PLA38 0	SATA		80 GB	(Upstream) PC	LKHLVV0	HDD Wipe x 1	In Unit: HDD Wipe x 1	SUCCESS	jguzman
7	PVFB44ZES9L9LE	NONE		HITACHI	Hitachi HDS72168	SATA		80 GB	(Upstream) PC	LKCYNWH	HDD Wipe x 1	In Unit: HDD Wipe x 1	SUCCESS	jguzman
8	PF1B75E8SKGLMM	NONE		HITACHI	HDS728080PLA38 0	SATA		80 GB	(Upstream) PC	LKHCT6	HDD Wipe x 1	In Unit: HDD Wipe x 1	SUCCESS	jguzman
9	PVFB44ZES9BLLE	None		HITACHI	Hitachi HDS72168	SATA		80 GB	(Upstream) PC	LKCYBPB	HDD Destroy	In Unit: HDD Destroy	SUCCESS	hnunez
10	RS2S517M	None		HITACHI	NA	SATA		250 GB	(Upstream) PC	MJ26345	HDD Wipe x 1	In Unit: HDD Wipe x 1	SUCCESS	hnunez
11	WD-WXE208EL1789	None		Western Digital	WDC WD800BEVS-08	SATA		80GB	(Upstream) Laptop	L3R3661	HDD Wipe x 1	In Unit: HDD Wipe x 1	SUCCESS	fstanley



Thank You!



Clive Hess | Executive Vice President | (713) 866-8021 | chess@compucycle.com